

# THE PURPLE™ STIRRUP REPAIR GUIDE

## 03-0114-A ACTUATOR HANDLE

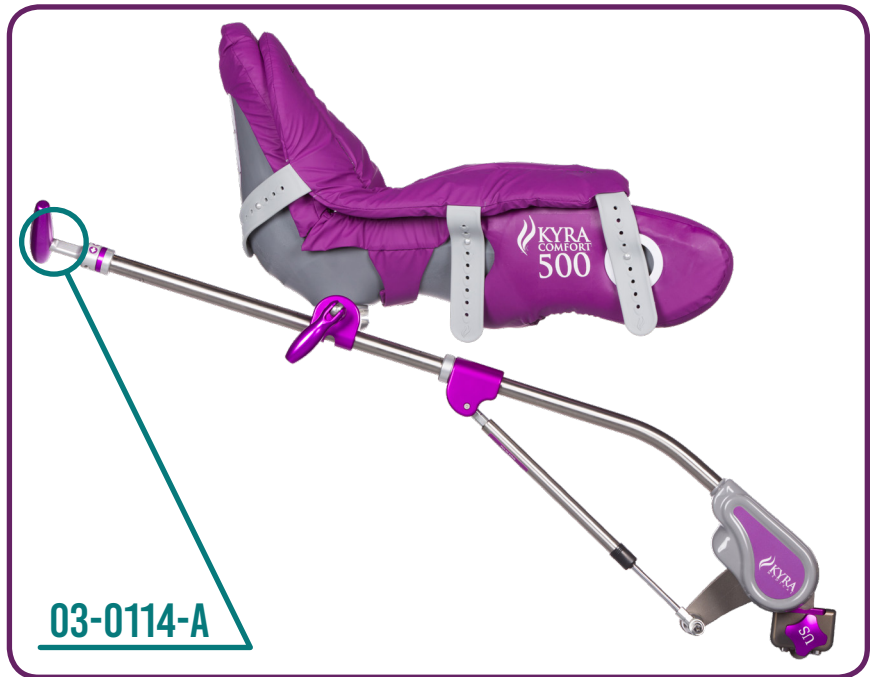
**Scope:** This document provides instructions for the replacement of the Actuator Handle on the Kyra Comfort 3000, 3100, 5000, 5100, 5200 and similar models.

**BEFORE USING THIS PROCEDURE ENSURE THAT IT IS THE LATEST REVISION:**

### 03-0114, Rev A

Kyra Repair Guide\_Actuator Handle  
ECO 1053, Effective Date: 28 June, 2019

	Kyra Medical Inc. 100 Otis St. Unit 1 Northborough, MA 01532 United States of America	
<b>EC</b> <b>REP</b>	Emergo Europe, Prinsessegracht 20 2514 AP The Hague, Netherlands	



### REQUIRED COMPONENTS, OTS PARTS AND MATERIALS

ITEM	PART NUMBER	DESCRIPTION	QTY.
1	CMP-1078-B	Single Piece Handle, Type 2	1
2	CMP-1014-B	Handle Base, Pinned (Only for Gen 1 replacement)	1
3	OTS-1062	1/4-20 x 1 3/4" Flat Head, SS Hex Screw	1
4	MAT-1002	Loctite 263 (red)	1

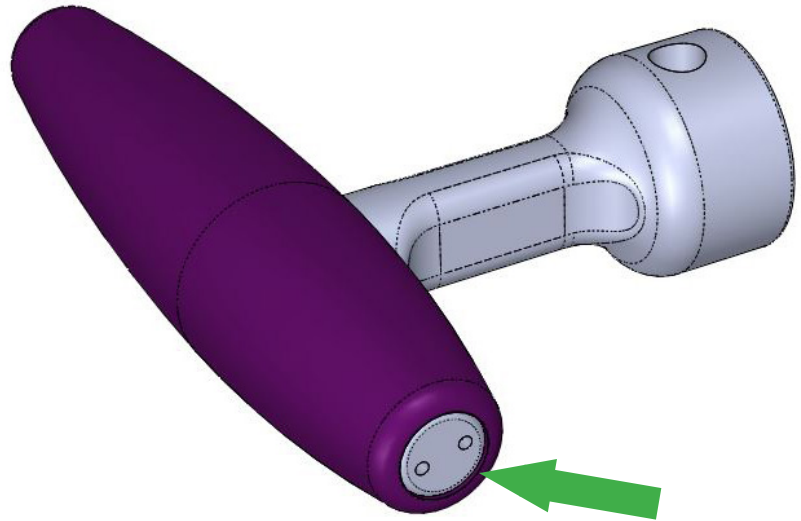
Property of Kyra Medical, Inc. ©2019



## 1. IDENTIFICATION:

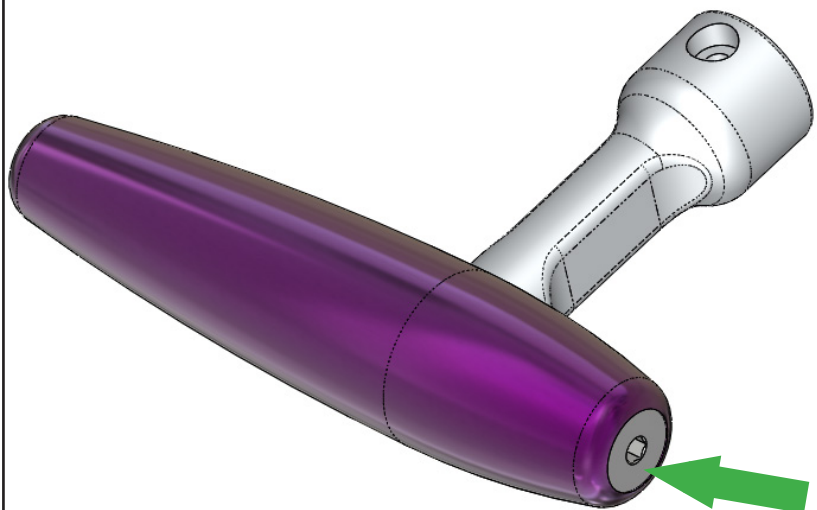
1.1.a. Gen 1 Kyra Stirrups use a Security Screw (fig. 1.1.a) to lock the handle into place, Gen 2 and beyond use a standard Hex fastener (fig. 1.1.b).

### GEN 1



(fig. 1.1.a)

### GEN 2

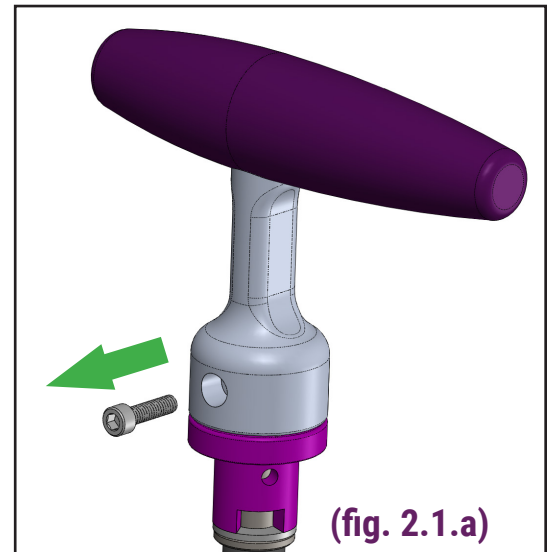


(fig. 1.1.b)

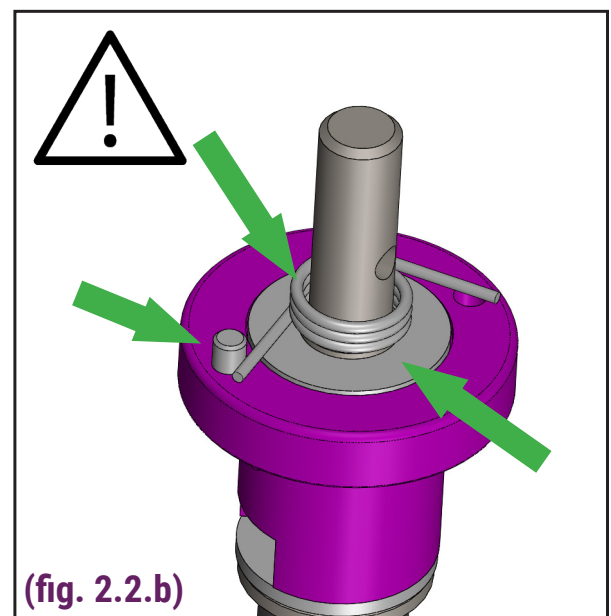
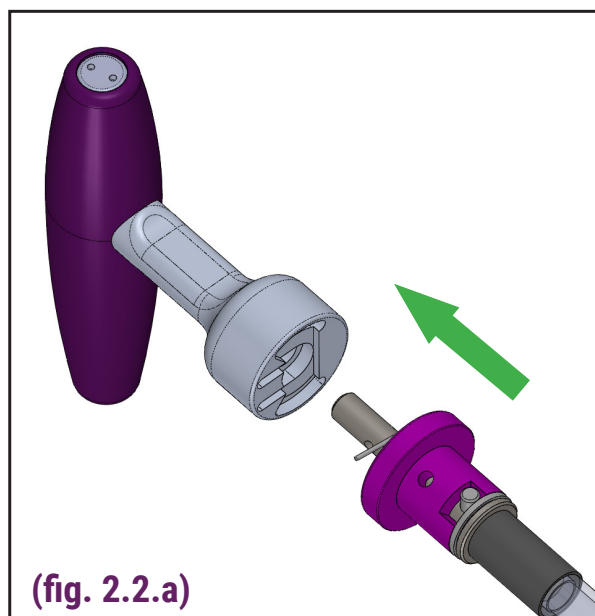
## 2. REMOVAL INSTRUCTIONS, GEN 1:

The Gen 1 Actuator Handle requires removal of the Handle Base as well as the Handle itself due to the permanent installation of the Security Screw.

2.1.a. Begin by removing the Fastener on the underside of the Handle Base. (fig. 2.1.a)

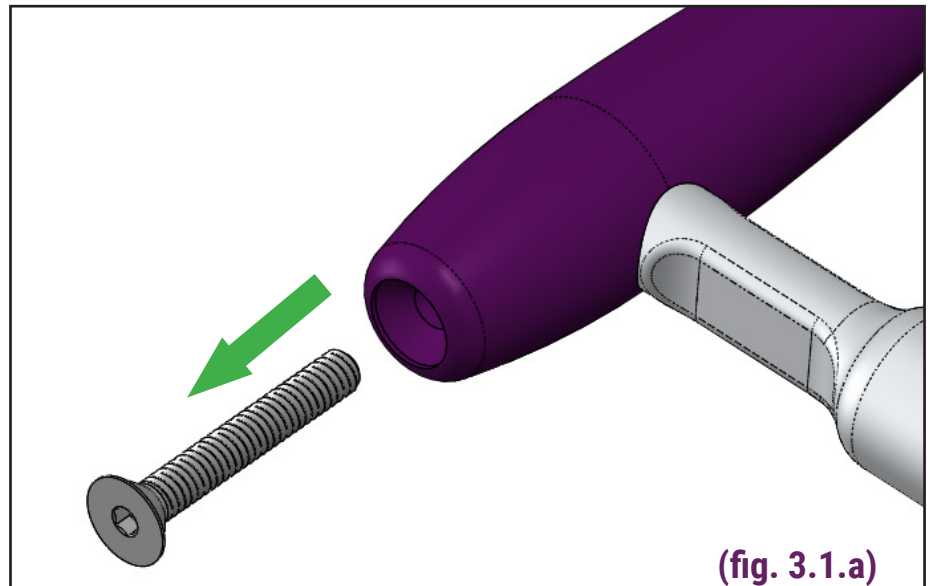


2.2.a. Pull the Handle and Handle Base assembly axially, away from the end of the Main Support Tube. (fig.2.2.a) Note: There is a Torsion Spring, a small dowel pin and a white Teflon washer under the Handle Assembly. Care should be taken not to let these pieces become lost. (fig. 2.2.b)



### 3. REMOVAL INSTRUCTIONS, GEN 2:

3.1.a. Removal of the GEN 2 Actuator Handle is more simple. Remove the Flat Head Hex Fastener, application of heat may be needed to break the Loctite 263 (red). (fig. 3.1.a) Once the Fastener is removed, pull only the Purple Actuator Handle off the Handle Base to remove.



### 4. INSTALLATION INSTRUCTIONS, ALL TYPES:

GEN 1 Handle types will no longer be provided for replacement, all stirrups requiring replacement Handles will be upgrades to the GEN 2 type.

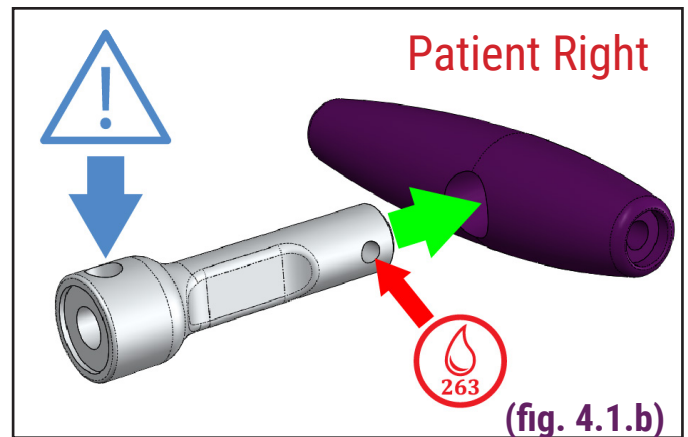
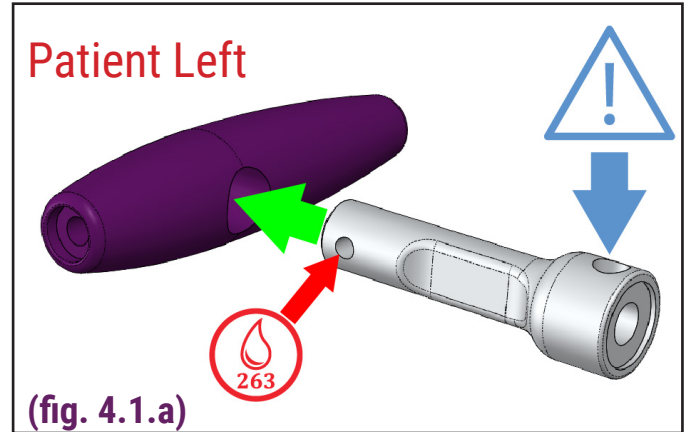
**Continued on next page...**

## 4. INSTALLATION INSTRUCTIONS, ALL TYPES: (CONT'D)

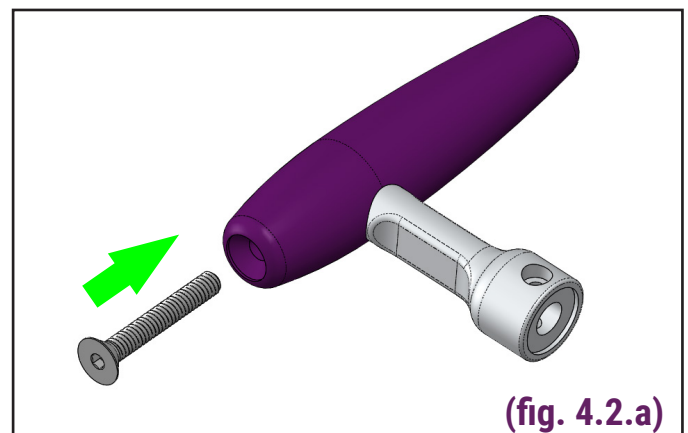
4.1 Apply Loctite 263, (MTL-1002) as indicated. (fig. 4.1.a) **or** (fig. 4.1.b) and insert Handle Base into Single Piece Handle. (fig. 4.1.a) **or** (fig. 4.1.b)



Be aware of differing orientation of Left and Right subassemblies



4.2 Install OTS-1062, 1/4"-20 x 1 3/4" Flat Head Hex Screw hand tight. (fig. 4.2.a)



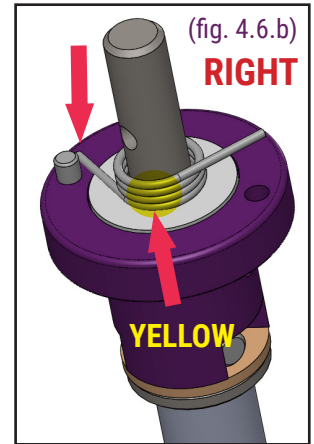
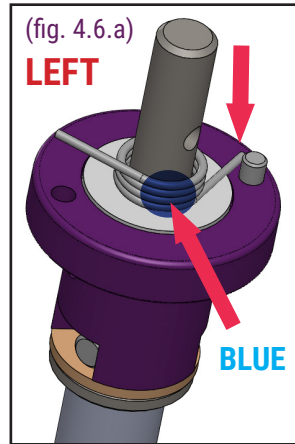
4.3 Check for looseness or movement between Handle and Handle Base. Re-tighten if needed.

## 4. INSTALLATION INSTRUCTIONS, ALL TYPES: (CONT'D)

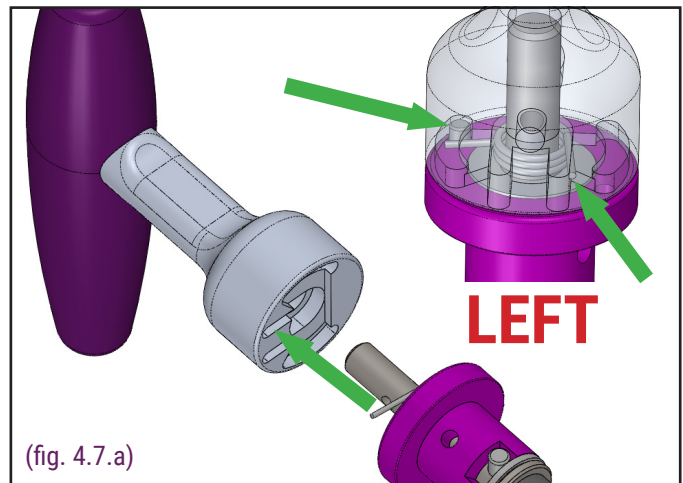


Careful attention must be paid to Left and Right orientation and proper fitting of the Torsion Spring.

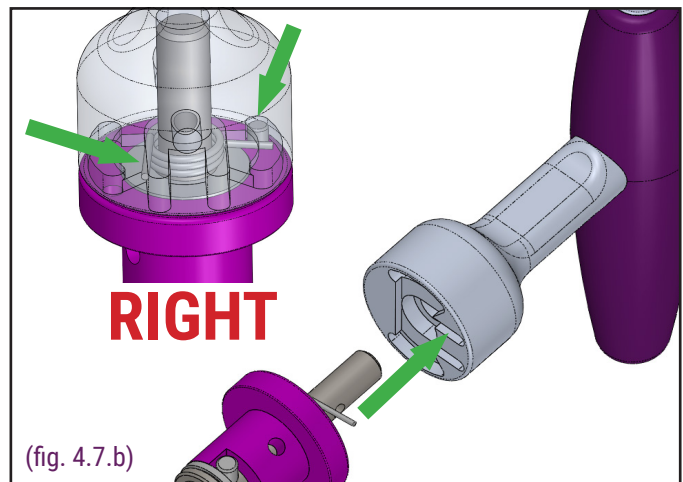
- 4.6 Ensure Torsion Spring is installed onto Finishing Cap as indicated. Blue marking for the LEFT Drive and Yellow marking for the RIGHT Drive. (fig. 4.6.a) (fig. 4.6.b)



- 4.7.a **PATIENT LEFT:** Orient Torsion Spring arm to fit into slot as indicated. (fig. 4.7.a) Ensure Dowel Pin aligns into far slot. Hold both subassemblies together and proceed to step 4.8.

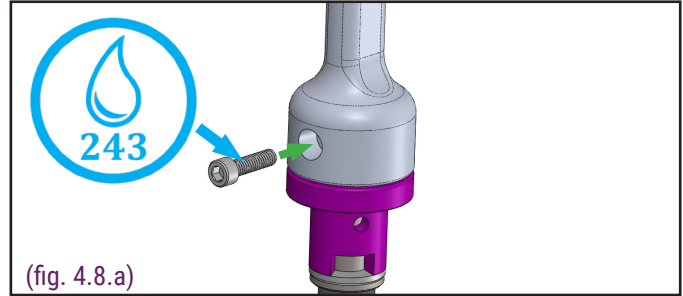


- 4.7.b **PATIENT RIGHT:** Orient Torsion Spring arm to fit into slot as indicated. (fig. 4.7.b) Ensure Dowel Pin aligns into far slot. Hold both subassemblies together and proceed to step 4.8.



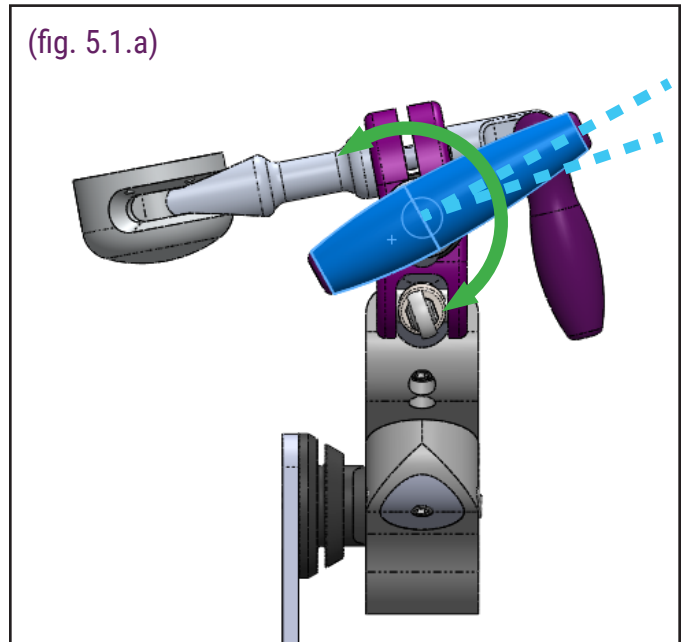
## 4. INSTALLATION INSTRUCTIONS, ALL TYPES: (CONT'D)

- 4.8 Twist Handle Assembly as needed to align holes. Apply Loctite 243 to OTS-1036 Socket Head Cap Screw and install. (fig. 4.8.a)



## 5. TEST FUNCTIONALITY

- 5.1 Actuator Handle should rest at a 25-30° angle relative to the floor. Twist the handle to ensure smooth actuation and full range of motion. Actuator Handle should return to angled position when released. (fig. 5.1.a)



**END**